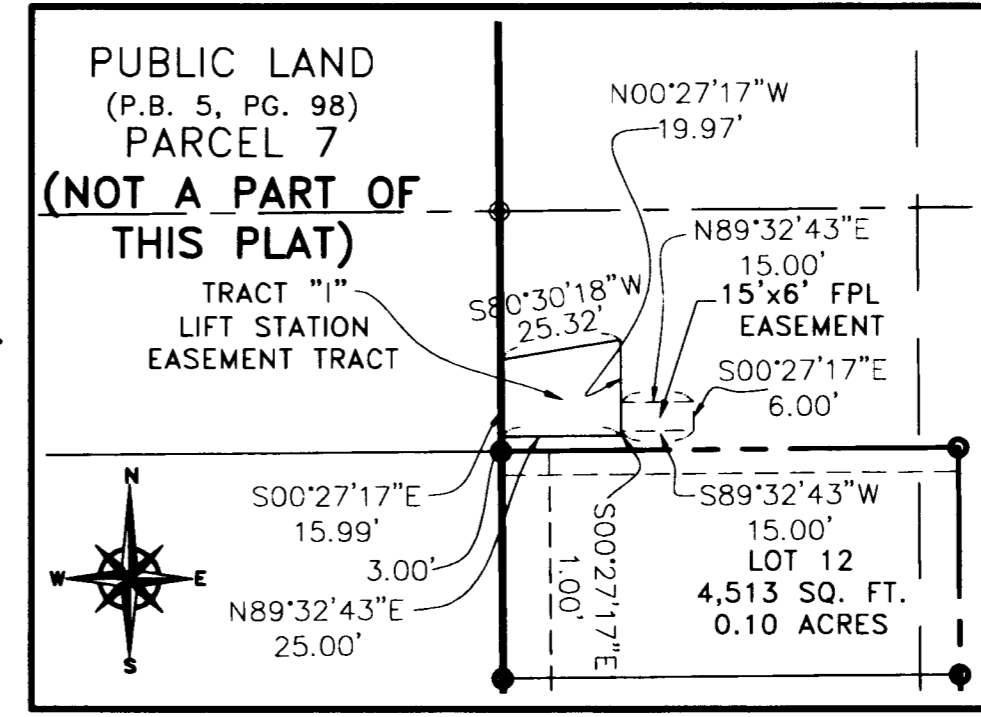


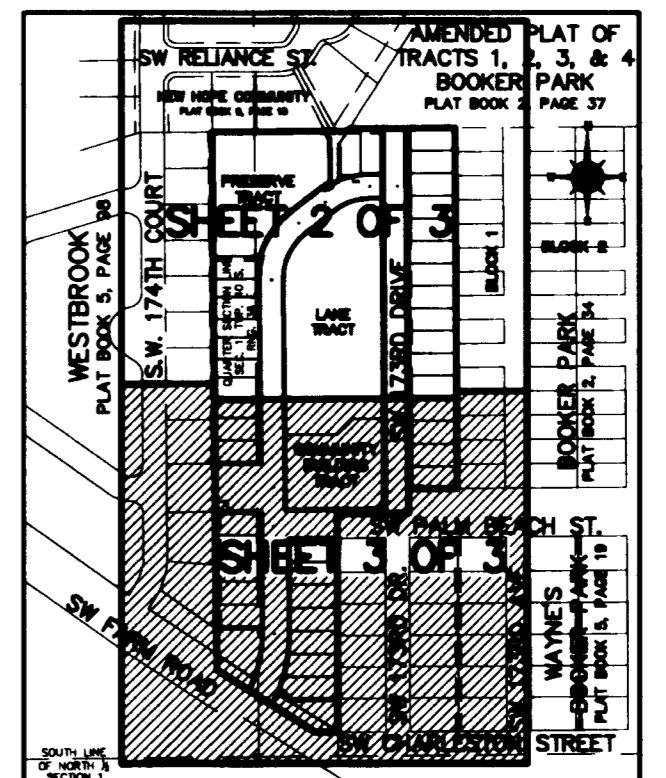
CARTER PARK

BEING A REPLAT OF A PORTION OF BOOKER PARK, PLAT BOOK 2, PAGE 34 AND BEING A PORTION OF THE NORTH ONE HALF OF SECTION 1, TOWNSHIP 40 SOUTH, RANGE 38 EAST IN INDIANTOWN, MARTIN COUNTY, FLORIDA SHEET 3 OF 3



CLERK'S RECORDING CERTIFICATE
I, MARSHA EWING, CLERK OF THE CIRCUIT COURT OF MARTIN COUNTY, FLORIDA, HEREBY CERTIFY THAT THIS PLAT WAS FILED FOR RECORD IN PLAT BOOK _____ PAGE _____ MARTIN COUNTY, FLORIDA, PUBLIC RECORDS THIS DAY OF _____ 2011
MARSHA EWING
CIRCUIT COURT
MARTIN COUNTY, FLORIDA
BY DEPUTY CLERK
FILE NO. _____

PARCEL CONTROL NO.



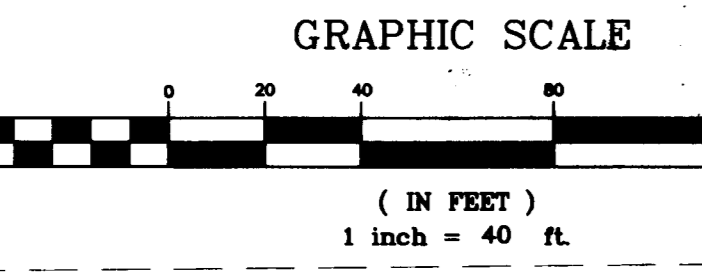
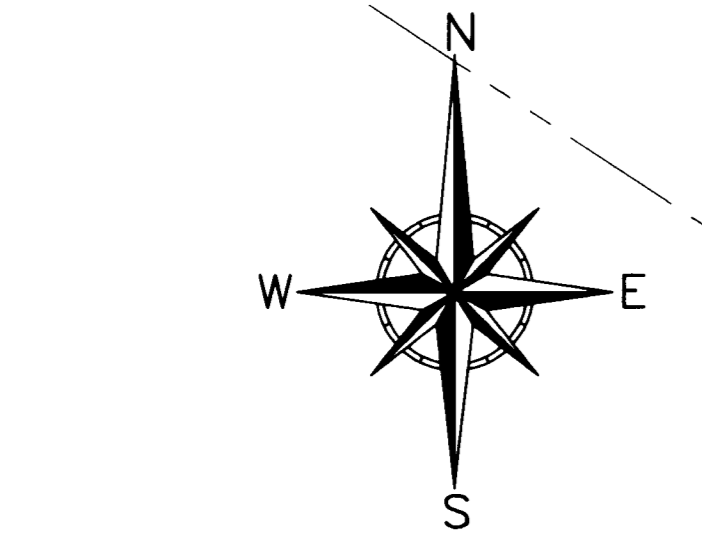
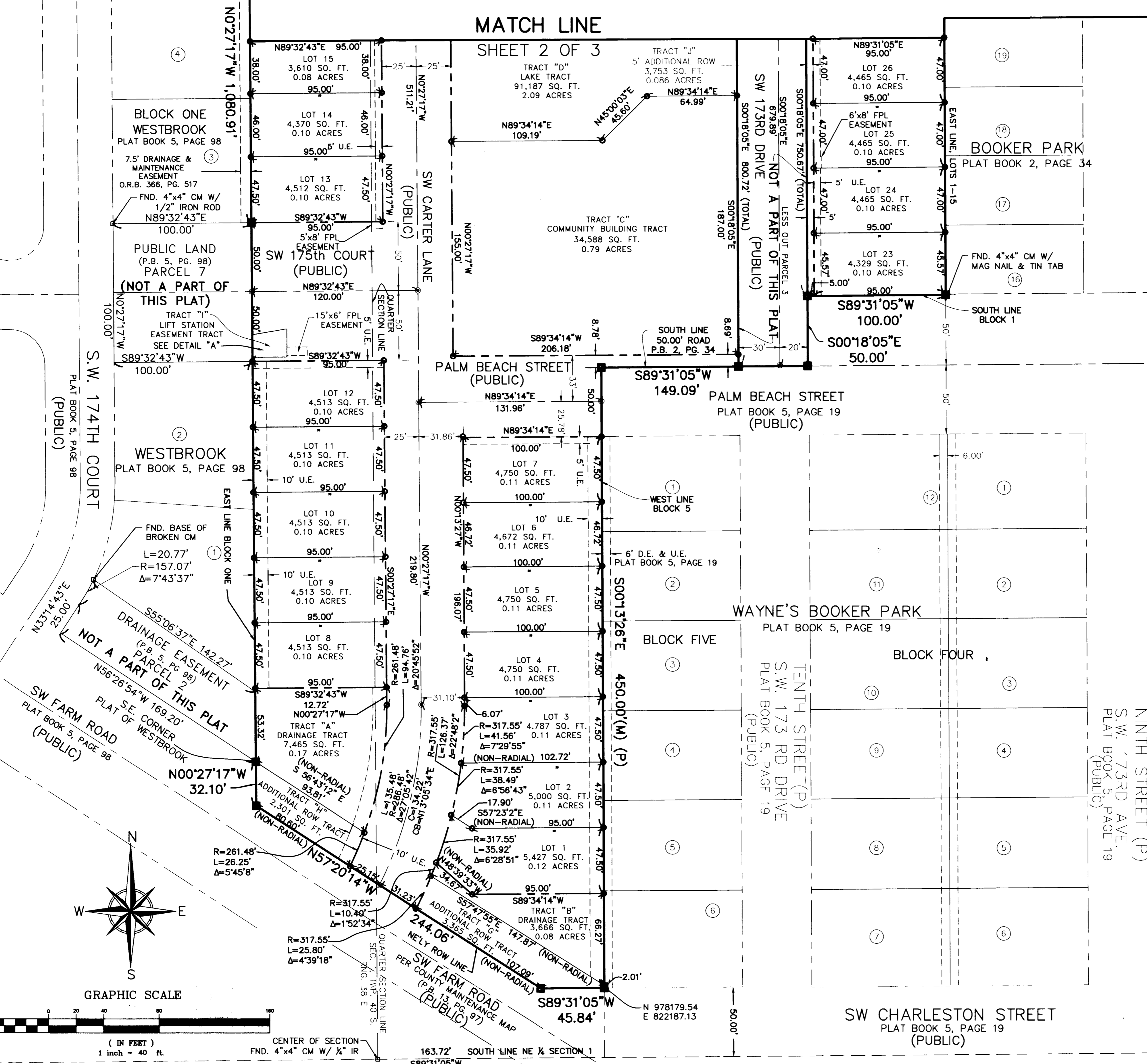
KEY MAP
SCALE: 1" = 400'

LEGEND

- BL INDICATES BETSY LINDSAY, INC.
- C INDICATES CHORD LENGTH
- C.R. INDICATES COUNTY ROAD
- CB INDICATES CHORD BEARING
- CM INDICATES CONCRETE MONUMENT
- D.E. INDICATES DRAINAGE EASEMENT
- FND. INDICATES FOUND
- IR INDICATES FLORIDA POWER & LIGHT
- I.U.E. INDICATES IRON ROD
- L INDICATES INDIANTOWN UTILITY EASEMENT
- LB INDICATES LENGTH OF ARC
- LB INDICATES LICENSED BUSINESS
- (M) INDICATES FIELD MEASURED
- M.E. INDICATES MAINTENANCE EASEMENT
- NAD INDICATES NORTH AMERICAN DATUM
- O.R.B. INDICATES OFFICIAL RECORDS BOOK
- (P) INDICATES PER PLAT
- P.B. INDICATES PLAT BOOK
- POP INDICATES PERMANENT CONTROL POINT
- P.C. INDICATES PAGE
- R INDICATES RADIUS
- RNG. INDICATES RANGE
- REF. PT. INDICATES REFERENCE POINT
- ROW INDICATES RIGHT OF WAY
- SEC. INDICATES SECTION
- S.R. INDICATES STATE ROAD
- SQ. FT. INDICATES SQUARE FEET
- TWP. INDICATES TOWNSHIP
- U.E. INDICATES UTILITY EASEMENT
- PRM INDICATES PERMANENT REFERENCE MONUMENT
- W/ INDICATES WITH
- Δ INDICATES DELTA (CENTRAL) ANGLE
- ⊙ INDICATES SET NAIL AND DISK "BL LB 6852"
- INDICATES NO. 5 (5/8") IRON ROD AND CAP "BL LB 6852" [PERMANENT CONTROL POINT (PCP)]
- INDICATES SET 4"x4" CONCRETE MONUMENT WITH ALUMINUM DISK STAMPED "BETSY LINDSAY, INC. LB 6852 PRM" [PERMANENT REFERENCE MONUMENT (PRM)] UNLESS OTHERWISE NOTED
- ⊠ INDICATES FOUND 4"x4" CONCRETE MONUMENT (LABELED AS NOTED)
- ⊕ INDICATES SECTION CORNER

GENERAL NOTES

- A. BEARINGS AS SHOWN HEREON ARE BASED ON STATE PLANE COORDINATES, REFERENCE THE NORTH AMERICAN DATUM OF 1983/1990 (NAD 83/90), FLORIDA EAST ZONE, REFERENCE A BEARING OF N0°27'17"W ALONG THE EAST LINE OF THE LINE OF BLOCK ONE OF THE PLAT OF WESTBROOK, PLAT BOOK 5, PAGE 98, PUBLIC RECORDS OF MARTIN COUNTY, FLORIDA.
- B. THIS PLAT, AS RECORDED IN ITS ORIGINAL FORM IN THE PUBLIC RECORDS, IS THE OFFICIAL DEPICTION OF THE SUBDIVIDED LANDS DESCRIBED HEREON AND WILL IN NO CIRCUMSTANCES BE SUPPLEMENTED IN AUTHORITY BY ANY OTHER FORM OF THE PLAT, WHETHER GRAPHIC OR DIGITAL.
- C. NOTICE: THERE MAY BE ADDITIONAL RESTRICTIONS THAT ARE NOT RECORDED ON THIS PLAT THAT MAY BE FOUND IN THE PUBLIC RECORDS OF THIS COUNTY.
- D. PARCEL 2, AND PARCEL 7 OF THE PLAT OF WESTBROOK, PLAT BOOK 5, PAGE 98, AND PARCEL 3 OF THE PLAT OF BOOKER PARK, PLAT BOOK 2, PAGE 34, PUBLIC RECORDS OF MARTIN COUNTY, ARE NOT INCLUDED IN THIS PLAT DUE TO RESTRICTIVE COVENANTS.



B BETSY LINDSAY, INC.
SURVEYING AND MAPPING
7997 S.W. JACK JAMES DRIVE STUART, FLORIDA 34997
(772)286-5753 (772)286-5933 FAX
LICENSED BUSINESS NO. 6852
CARTER PARK SHEET 3 OF 3